



Business **Solutions**

IT **Solutions**

Forestry **Solutions**

The Logs Module

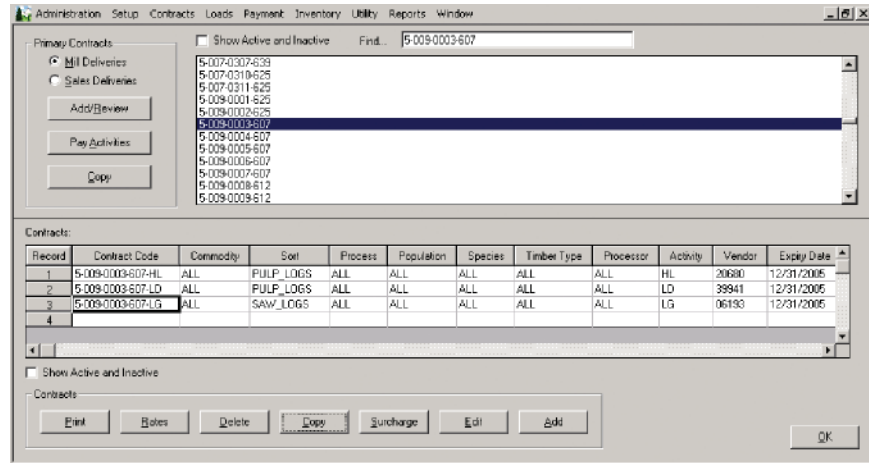
First released in 1995, the Yard Boss system is designed to meet the woodlands accounting and inventory management needs of the forest industry. Over the years, the system has evolved to become very sophisticated, flexible and configurable. We are confident Yard Boss fits the business processes of most forest companies.

STREAMLINING THE WOODLANDS ACCOUNTING PROCESS

Contract Management

The key strength of the Yard Boss system is its ability to handle the complexities of the forest industry's contract management process.

Contracts can be set up based on the geographic region where wood originates, the vendor from who wood is sourced, or a combination of both. During the contract set-up process the vendors to be paid, the basis upon which payment is



calculated (volume, tonnes, tons, board feet, piece-scale) and the rates used in calculating the payments are specified. Payment rates can be broken down on configurable parameters, such as destination, species, grade, product, sort, length, class or other user-defined criteria. Criteria can be combined so that there may be several rates for a given species, broken down by the sort or other classification. The system's flexibility allows for virtually unlimited number of rate breakdowns within any contract.

Contractor Payment

Contractor payment is one of the most powerful and flexible functions of the program. All of the information required to run payments for the pay period is captured as the load data are entered into the system. Once contracts are set up, running the actual payment process itself is a highly automated process. The system presents the lists of payments it has calculated for each vendor, sorted by contract and harvesting or hauling activity. Lists can be reviewed and corrected before final vendor statements are generated and approved.

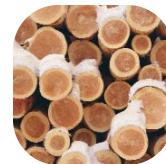
Next>



Offices in Canada:
Hinton, Alberta - Edmonton, Alberta

Offices in USA:
Jacksonville, Florida - Tucson, Arizona

Toll Free: 1-800-575-6137
Fax: 780-817-4049
email: info@aldatasoftware.com
www.aldatasoftware.com





Another powerful function is that the system accommodates advances, holdbacks and retroactive pay adjustments. Advances and holdbacks can be assigned to deliveries from specific contracts or can be set up for “on demand” collections.

Adjustments

Even when painstaking care and attention is given to contractor payments, it is inevitable that payment rates will change retroactively, or one-off payment surcharges such as fuel adjustments will need to be calculated. Yard Boss automates this labour intensive exercise, thus reducing man-hours and opportunities for human error. When a pay rate or conversion rate is adjusted for a specified timeframe, the system automatically calculates adjustments on all payments in that timeframe. The system then makes the appropriate adjustments for each vendor in the current accounting period.

Electronic Payment Approval

Yard Boss has a built-in electronic vendor statement approval system that permits accountants to submit vendor statements for approval. Once a statement is submitted for approval, a copy of the statement is saved in the database and all its data are locked down to prevent editing. When submitted for approval, the statement can either be approved, re-submitted for further modifications, or left “on hold” until a later time. Load or payment data associated with these statements can only be edited if the statement is resubmitted for further modifications.

Inventory Management

Yard Boss is a valuable log inventory management tool. The system tracks all logs that enter or leave the yard. Yard Boss is compatible with different inventory tracking methods such as by log, load and deck face profiling. The system also permits inventory management in different units of measurement. For example, some decks may receive loads that are measured and paid in tons, other in cords and others in board feet. The system stores the data in the unit of measurement associated with the deck receiving the deliveries, but data can be converted into a standard unit of measure for reporting purposes.

As shown to the right, the software can accommodate a variety of operations including consumption, transfers, volume or cost adjustments and management of remote inventories. For reporting purposes, the inventory data can be queried and sorted by a combination of factors such as species, grade, deck and source. Ideally, you can use reports generated by the system to match fiber procurement with mill consumption and customer needs.

