



Business **Solutions**

IT **Solutions**

Forestry **Solutions**

Powerful Weigh Scale Management System

OVERVIEW

Scale Boss is one of the most powerful weigh scale systems available and is developed specifically for the forest industry. Scale Boss tracks inbound and outbound logs, chips and other commodities at attended and unattended weigh scales. The user interface is intuitive therefore data entry is quick and easy. Like other Boss Line systems, Scale Boss is flexible and is configured to match the business rules and processes of your company.

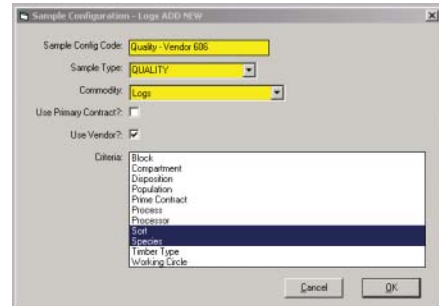
FEATURES

Flexible Configuration

Since 1991, ALDATA Software has been working together with forest companies to develop business and IT solutions. We understand that each forestry firm is unique and has its own way of doing business. ALDATA works with you, the client, to tailor our systems to match your business processes and practices. One of the most powerful features of Scale Boss is that it can be configured on site to reflect your practices. For example, the system can be configured to match variations of sampling rules for any wood commodity. Sampling is only one example of functions that are configured to match your operations.

Attended or Unattended Weigh Scales

Scale Boss can operate as an attended or an unattended system and integrates with modern weigh scale hardware. There are two types of automated data entry. The first is manual entry by the truck drivers following user-friendly prompts on a resistive touch screen. The second uses bar codes, swipe cards or other forms of electronic data input. Either way, Scale Boss improves the control and accuracy your company has over fiber inventory entering and leaving the woodyards.



Yard Boss-Chips can be configured to match a company's sampling protocol including attributes and sample loads. This screen shot demonstrates the system is being configured to sample the sort and species.

Next>



Offices in Canada:
Hinton, Alberta - Edmonton, Alberta
Offices in USA:
Jacksonville, Florida - Tucson, Arizona

Toll Free: 1-800-575-6137
Fax: 780-817-4049
email: info@aldatasoftware.com
www.aldatasoftware.com





Business **Solutions**



IT **Solutions**



Forestry **Solutions**

Data Collection and Validation

Scale Boss improves the accuracy and ease of data collection, as well as automates the contract payment process. ALDATA Software works with you, the client, to determine how the system should be configured to best match your business practices. This is often determined by the way fiber procurement contracts are structured.

Scale Boss interfaces with the weigh scale and obtains load weight. These data are printed on the load ticket and enter the company's database. Once in the database, load data are tied to the appropriate contract and exported to a fiber management system, such as Yard Boss, thus making the payment process efficient, automated and accurate.

Scale Boss configuration and set-up provide the rules that drive data collection and validation. The system uses filters to increase the ease and accuracy of data collection. The filters are based on business rules defined in your contracts with vendors, and during set-up these business rules are incorporated into the system. The filters prompts truckers with screens and fields relevant to their contracts.

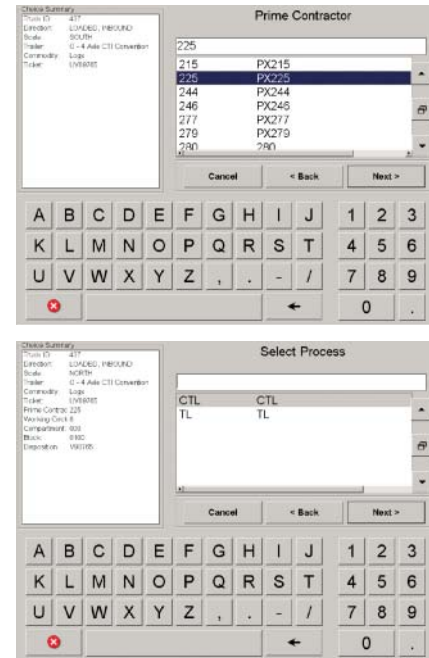
Additional Features

- At the click of a button, Scale Boss generates real-time reports on data collected at the weigh scale.
- The system can operate as a stand-alone or integrate with fiber management software such as Yard Boss. Scale Boss is able to import and export data with most third party software or hardware.
- Scale Boss is a secure system. Password protection ensures users can only access functions they are authorized to use.
- An open database allows users to access data to create reports using a variety of ODBC compliant tools including MS Access, MS Excel and Crystal Reports.

ALDATA Software is confident that Scale Boss will meet your needs.

Technical Specifications

Scale Boss is developed in MS Visual Basic 6.0 and MS SQL Server 2000. It is a Microsoft Windows compliant program.



These screen shots illustrate how filtering works. A Scale Boss user selects the contractor they are hauling for, called the "prime contractor". This selection results in Scale Boss automatically filling other fields with accurate load information such as commodity and cutblock. Information pertaining to the prime contractor is entered into Scale Boss during set-up.